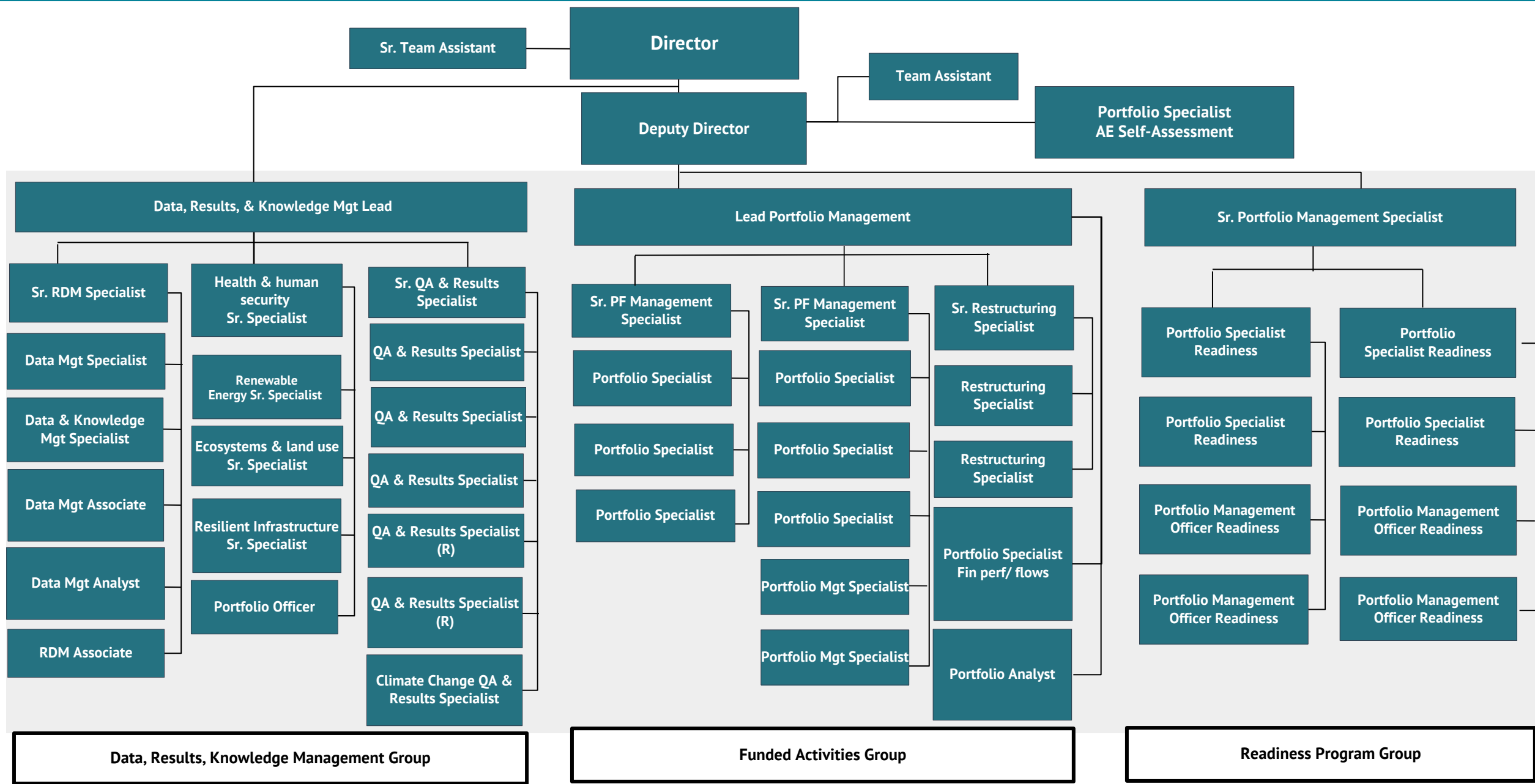




Division of Portfolio Management

The Division of Portfolio Management ensures timely delivery of projects/programs and that GCF learns from experience to deliver sustainable results through early warning systems, adaptive management approaches, promoting results and knowledge management as well as learning to improve project impacts in line with GCF objectives



Data, Results, Knowledge Management Group

Funded Activities Group

Readiness Program Group