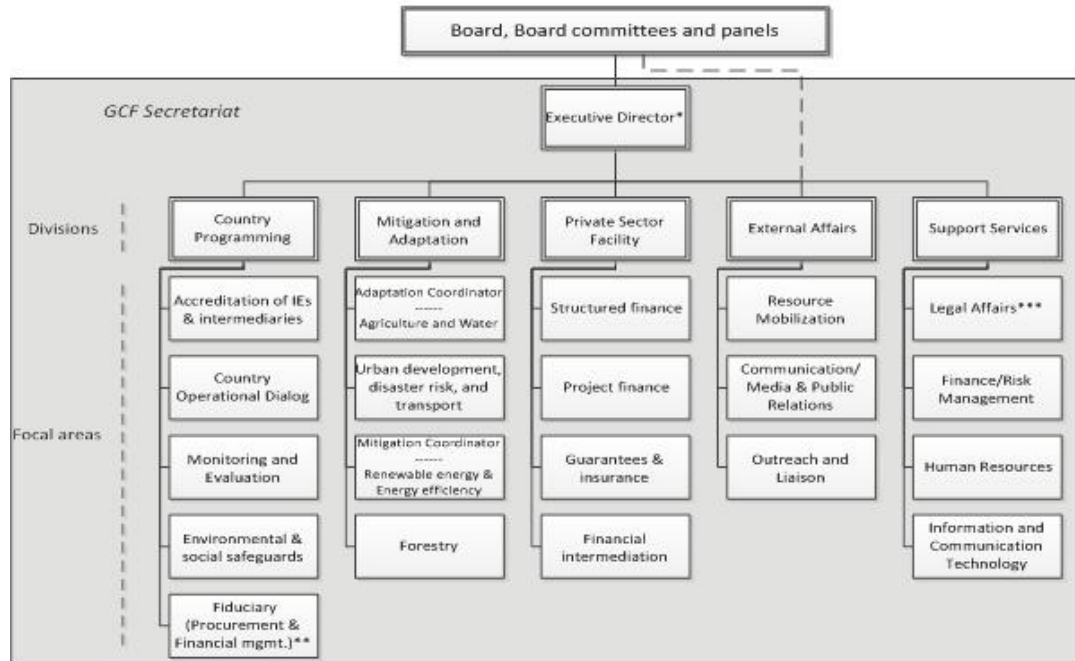


Annex XIII: Organizational diagram – Initial structure of the Secretariat in 2014



* Initial estimated staff requirement: 1 professional level staff member to support the Executive Director.

** In addition to their corporate responsibilities and tasks, this focal area will work closely with and for the Country Programming division.

***Provides legal, policy and strategic advice to the Executive Director, the Secretariat and the Board.